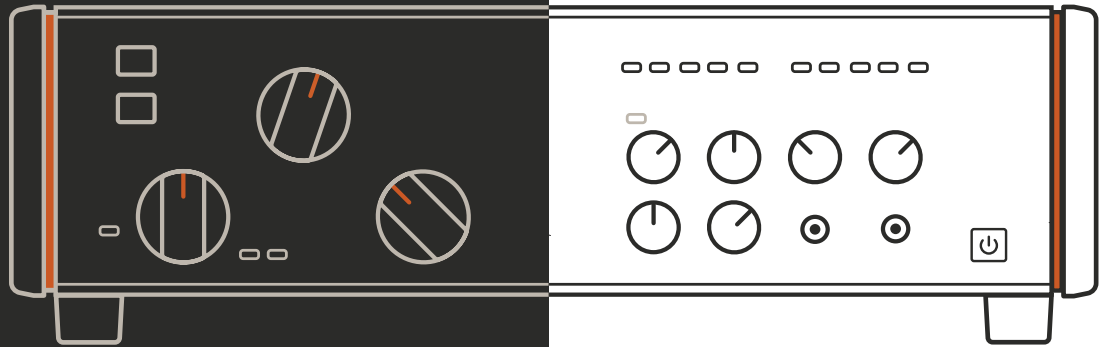
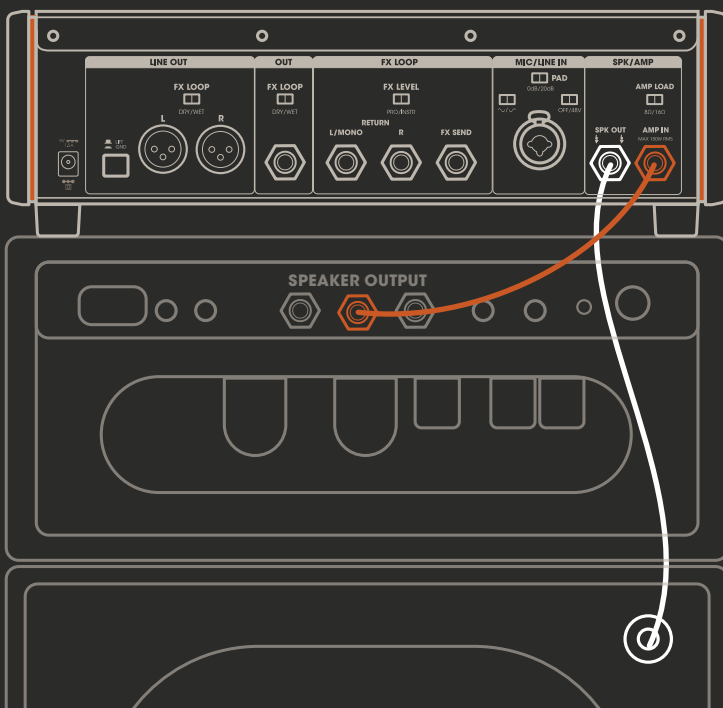


# QUICK START GUIDE



## SETUP

1. Make sure your tube amp is switched off
2. Cable up your amp and speaker with the Supreme Soaker



3. Set the Supreme Soaker's impedance switch to match your amp's output impedance
4. Connect the Supreme Soaker's power supply and turn it on, then turn on your amp
5. **PLAY AND ENJOY**

### Analog Speaker Simulation on your Line Out as well as Headphone Out.

This emulates the tone of a guitar loudspeaker by applying analog filters.



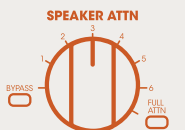
### Change the tone of your loudspeaker in the room.

The Speaker Tone knob changes the impedance curve that your amplifier "sees", allowing you to choose different sound options.



### Attenuate your tube amp and play at any volume where it sounds best without losing its dynamics.

For silent operation, turn to "full attenuation" and dial your amp right to the tonal sweet spot.



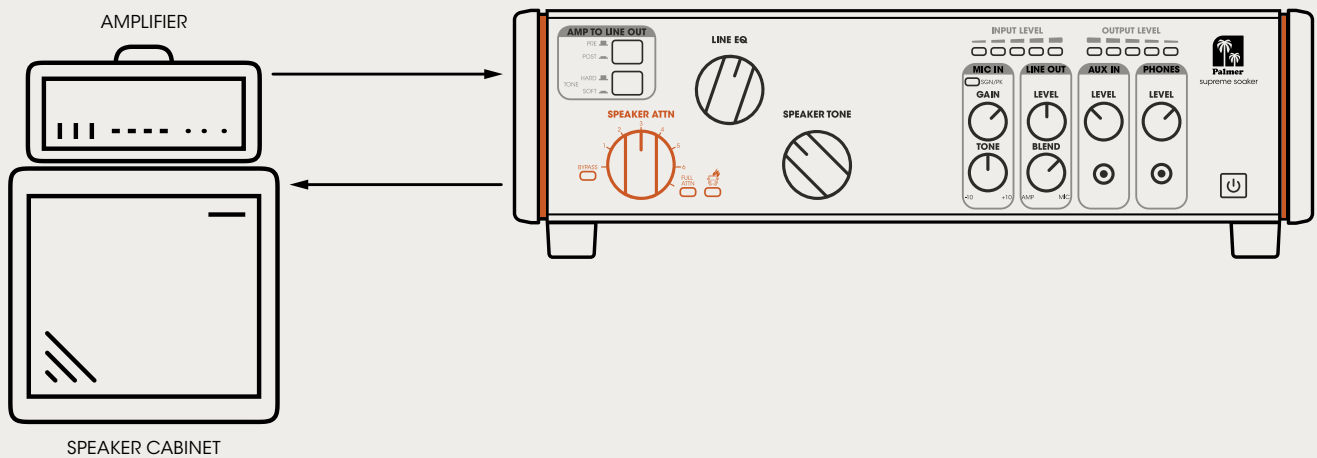
### THANK YOU FOR BUYING THE SUPREME SOAKER.

As you get to know your Supreme Soaker more, you'll start to realise in how many areas it can become an indispensable tool in your music making and creative endeavours. If you need further help and explanation, be sure to check the manual by scanning this QR code.



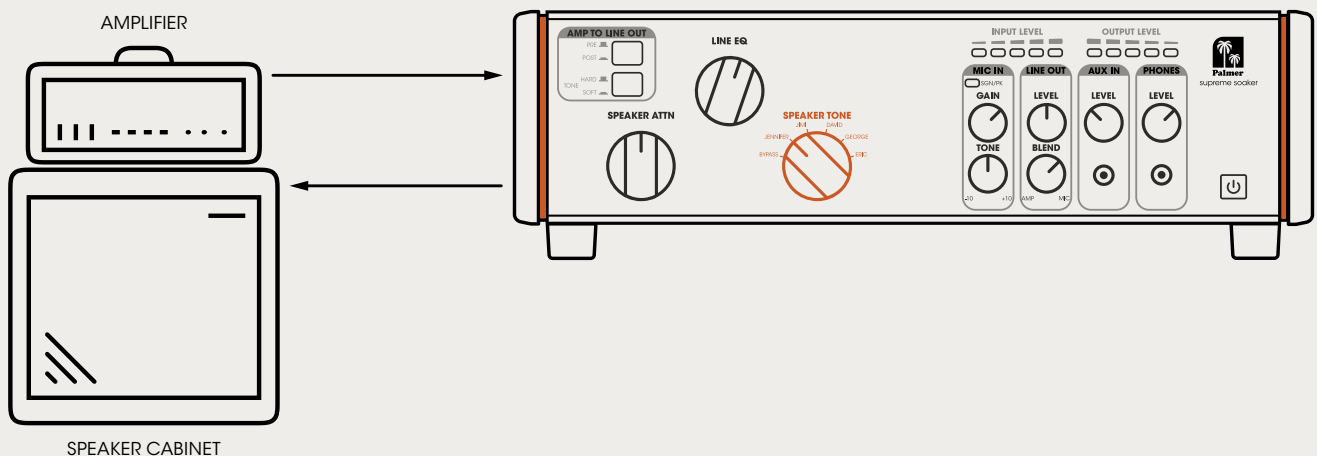
## ATTENUATION

Reduce the power delivered from your tube amp to your speaker to play the amp in the range where it sounds best without losing dynamics. For silent use, set the control to **FULL ATTN**. The Supreme Soaker delivers a continuous load to your amplifier at any attenuation level – even when you are not using the attenuation feature.



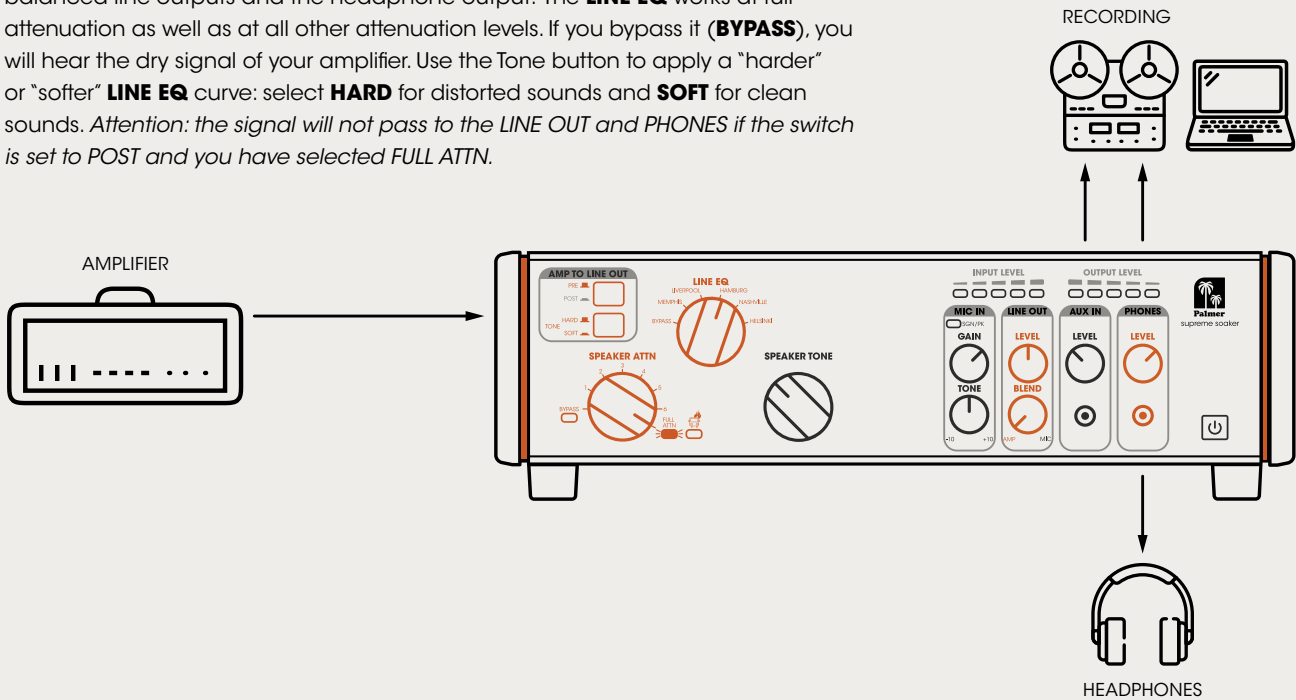
## SPEAKER TONE CHANGE

This knob controls interactions between your amplifier and your speaker. Using **SPEAKER TONE** changes the impedance curve that your amplifier "sees", allowing your speaker to produce different sound variations.



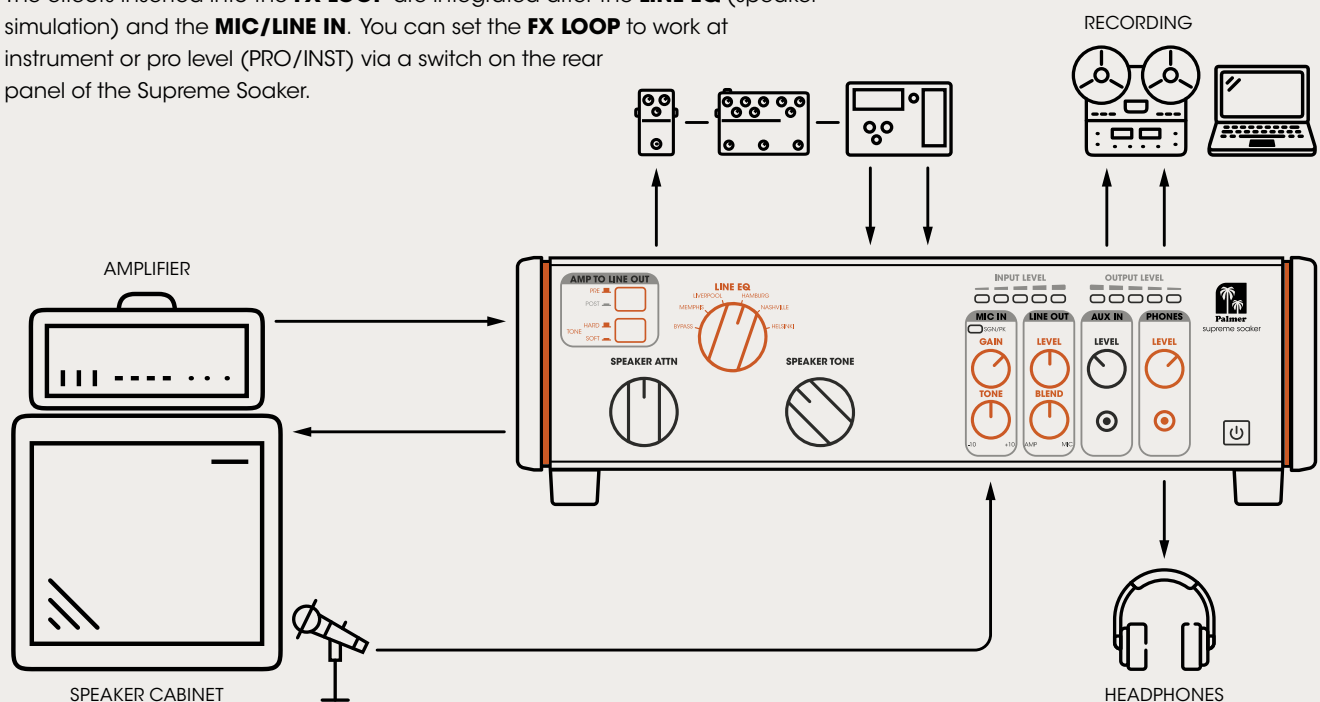
## SPEAKER SIMULATION (LINE EQ)

Activate an analogue **LINE EQ** – also known as speaker simulation – on the balanced line outputs and the headphone output. The **LINE EQ** works at full attenuation as well as at all other attenuation levels. If you bypass it (**BYPASS**), you will hear the dry signal of your amplifier. Use the Tone button to apply a “harder” or “softer” **LINE EQ** curve: select **HARD** for distorted sounds and **SOFT** for clean sounds. *Attention: the signal will not pass to the LINE OUT and PHONES if the switch is set to POST and you have selected FULL ATTN.*

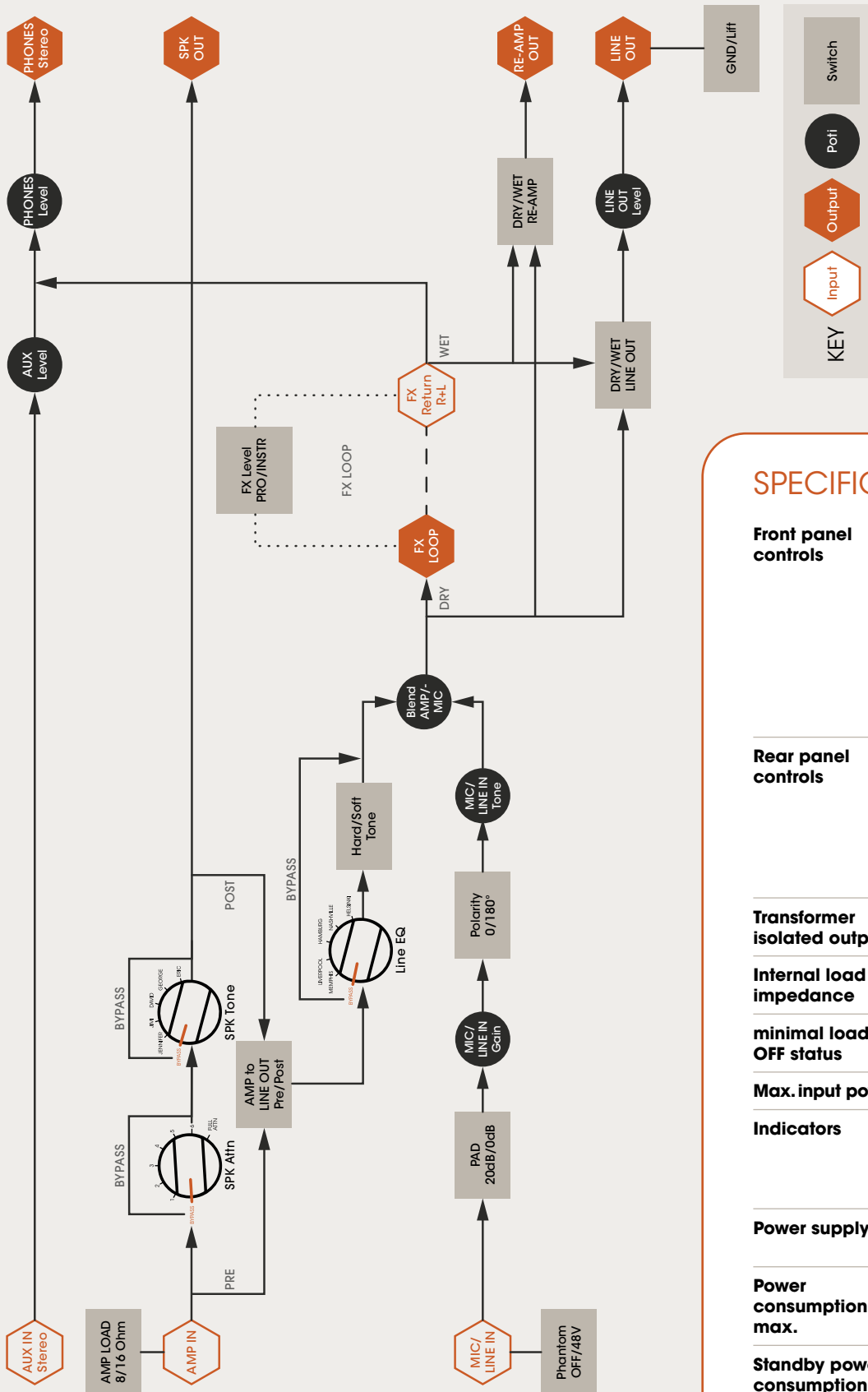


## INSERTING YOUR STEREO EFFECTS

Integrate your favourite effects pedals into the serial **FX LOOP**. The effects inserted into the **FX LOOP** are integrated after the **LINE EQ** (speaker simulation) and the **MIC/LINE IN**. You can set the **FX LOOP** to work at instrument or pro level (PRO/INST) via a switch on the rear panel of the Supreme Soaker.



SIGNAL FLOW CHART



**Adam Hall GmbH**  
Adam-Hall-Str. 1  
61267 Neu-Anspach  
Telefon: +49 6081 9419-0  
Fax: +49 6081 9419-1000  
Mail: info@adamhall.com

palmer-germany.com

SPECIFICATIONS

Front panel controls

7-Step Speaker Attenuation, Line EQ (5 voicings), Speaker Tone (5 voicings), MIC gain, MIC Tone, Line Out Level, Line Out Blend, Aux In Level, Phone Level, Pre/Post Switch (Amp to Line Out), Hard/Soft Tone Selector

Rear panel controls

Amp Load Impedance Switch, MIC/LINE Input PAD, Phantom power, Polarity, FX Level (Pro/Instrument), FX Loop Re-Amp, FX Loop Line Out, GND/Lift

Transformer isolated outputs

yes

Internal load impedance

8Ω, 16Ω

minimal load in OFF status

16Ω

Max. input power

150W

Indicators

input level, output level; MIC signal/clip, attenuator: bypass, full attenuation, overheating

Power supply

9V DC barrel jack, 1.5A, center negative

Power consumption max.

13.5W

Standby power consumption

0.3W

Dimension

334 x 108 x 274 mm

Weight

6.6 kg